

3394RT SCISSOR LIFTS

Platform

- 2.18 m x 3.81 m steel platform (deck extension retracted)
- 1.22 m manual front deck extension
- Fold down handrails
- Dual side entry with half swing gates
- Lanyard attach points
- Proportional drive control with thumb steer
- Proportional lift/lower speed control
- Joystick enable for lift and drive
- Moveable and removable platform console box
- Load sensing system

Available Options

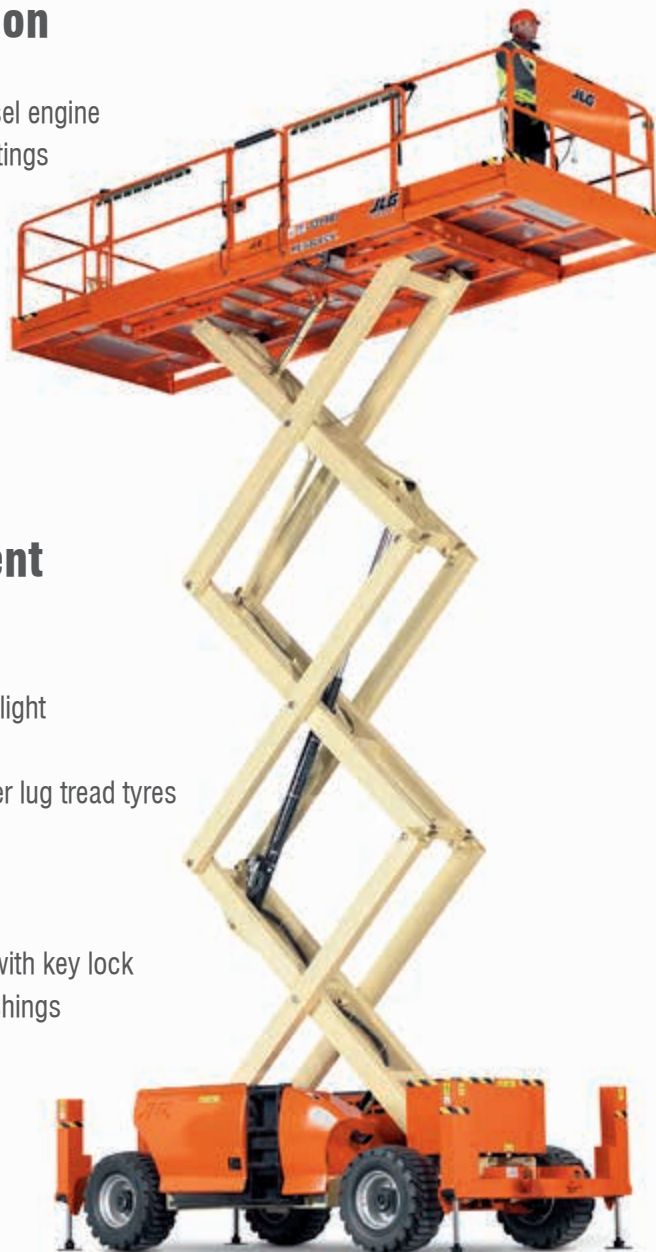
- 1.22 m manual rear deck extension
- 1.22 m powered dual deck extensions
- IN315/55 D20 foam filled loader lug tread tyres
- 12 x 16.5 foam filled non mark tyres
- Hydraulic levelling jacks
- On-board 2500W generator *
- Descent alarm
- All motion alarm
- 12 mm air line to platform
- Platform work lights ²
- Nite-Bright® accessory package ²
- Flashing amber beacon

Power & Transmission

- Deutz D2011L03 (36.4 kW) diesel engine
- Programmable “Personality” settings
- On-board self-diagnostic testing
- Engine distress warning/shut down system ¹
- Hydrostatic drive with anti stall function
- Two speed drive selection
- Four wheel drive

Functional Equipment & Accessories

- 3 degree tilt alarm and indicator light
- Steel scissor guards
- 33/1550 x 16.5 foam filled loader lug tread tyres
- Oscillating front axle
- Lifting/tie down lugs
- Hour meter
- Ground control selector switch with key lock
- Lubrication free scissor arm bushings
- Scissor maintenance prop
- Horn
- AC power cable to platform



- Plugs & Sockets
- Catalytic purifier muffler
- Spark arresting type muffler
- Cylinder bellows
- Pipe racks (Rail mounted)
- Pipe positioners
- 12V-DC auxiliary power ³

¹ Low oil pressure and high coolant temperature alarms with shut-down enabled/disabled by analyser.
² Includes four 40W platform mounted halogen floodlights
³ Only applicable on machines equipped with powered deck extensions
 * Subject to imminent change

3394RT SCISSOR LIFTS

Platform Height – Elevated	10.06 m
A. Platform Height – Lowered	1.57 m
B. Platform Railing Height	1.10 m
C. Stowed Height (Rails Folded)	1.97 m
D. Platform Size	2.18 m x 3.81 m
Front Deck Extension	1.22 m
Rear Deck Extension	1.22 m
E. Overall Width	2.39 m
F. Overall Length ¹	3.89 m
G. Wheelbase	2.95 m
Ground Clearance	0.30 m
Platform Capacity	1,020 kg
Capacity with Optional Deck Extension	905 kg
Capacity on Optional Deck Extension	225 kg
Lift/Lower Time	30/30 sec.
Maximum Drive Height	10.06 m
Machine weight ²	6,600 kg
Maximum Ground Bearing Pressure	10.40 kg/cm ²
Drive Speed 4WD	6.4 km/h
Gradeability 4WD	45%
Turning Radius – Inside	2.71 m
Turning Radius – Outside	5.93 m
Axle Oscillation	0.20 m
Tyres	33/1550 x 16.5 Foam Filled
Diesel Engine Deutz D2011L03	36.4 kW
Fuel Tank Capacity	119 L
Hydraulic System	190 L

JLG Industries, Inc. is a leading designer and manufacturer of access equipment and complementary services and attachments.

JLG has manufacturing facilities in the United States, France, Romania, China and Belgium. Customers throughout Europe, Scandinavia, Africa and the Middle East benefit from a network of dedicated sales and service operations designed to deliver the highest levels of support.

JLG is an Oshkosh Corporation company.

www.jlgeurope.com

¹ Dimensions with optional levelling jacks are; Length 4.75 m, Width 2.39 m, Weight +600 kg.
² Certain options or country standards may increase weight and/or dimensions.

