

Specifications

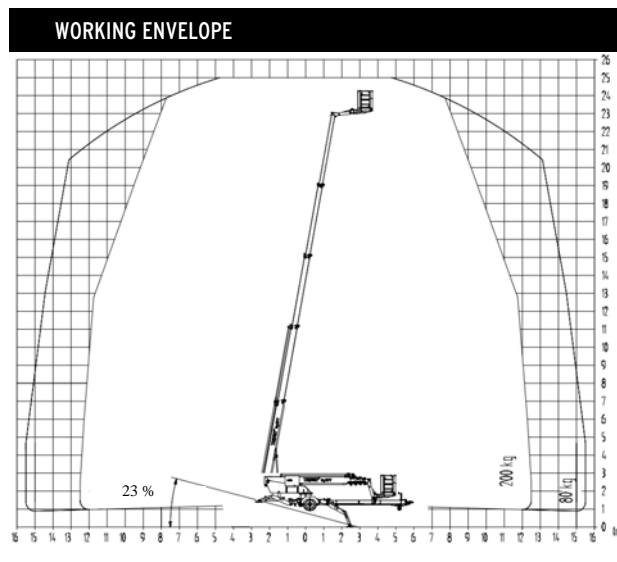
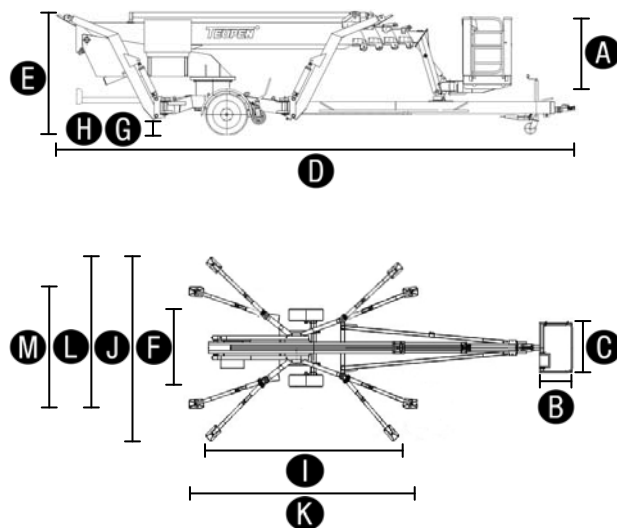
MEASUREMENTS	Metric	US
Working height, max.	25,00 m	82 ft
Horizontal outreach with 200 kg	12,50 m	41 ft
Up and Over Clearance, max.	-	-
Platform height (A)	1,10 m	3 ft 7 in
Platform length (B)	0,80 m	2 ft 8 in
Platform width (C)	1,20 m	3 ft 11 in
Length, overall (D)	8,50 m	27 ft 11 in
Height, travel position (E)	2,04 m	6 ft 8 in
Width, minimal overall width (F)	1,85 m	6 ft 1 in
Max. ground clearance, 12" wheels (G)	-	-
Max. ground clearance, 17,5" wheels (H)	0,30 m	12 in
Length outrigger footprint standard (I)	4,85 m	15 ft 11 in
Width outrigger footprint standard (J)	4,72 m	15 ft 6 in
Längd fotavtryck ena sidan smal (K)	5,97 m	19 ft 7 in
Bredd fotavtryck ensida sida smal (L)	3,78 m	12 ft 5 in
Bredd fotavtryck båda sidor smal (M)	2,84 m	9 ft 4 in
Outrigger plate (L x W)	0,31 m x 0,22 m	12 in x 8 ½ in

PRODUCTIVITY	Metric	US
Basket capacity	200 kg	441 lbs
Movable Jib	-	-
Basket rotation	180°	180°
Turret rotation max.	450°	450°
To be jacked up on ground slope of	13°/23 %	13.0°/23 %
Gradeability max.	16,7°/30 %	16.7°/30 %
Slope angle	16,7°/30 %	16.7°/30 %
Travel speed, friction wheel drive	1,5 km/h	0,62 mph
Maximum speed (standard)	80 km/h	50 mph
Maximum speed (option)	-	-

WEIGHT	Metric	US
Total weight in standard configuration	3300 kg	7,275 lbs
Towing capacity, training load	3200 kg, 100 kg	7,055 lbs, 220 lbs
Live load in travelling position	2,27 kN/m ²	47,4 psf
Live load in working position	1.54 kN/m ²	32,2 psf
Max. point load per outrigger plate	22,4 kN	5,036 lbs

POWER	Metric	US
Standard power sources	1) Diesel: Kubota D 722-E (14,1 kW, 18,2 Hp) 2) Electric motor: 115 V (US), 230 V (EU)	
Optional power sources	-	
Fuel tank capacity Diesel engines	13,0 l	3,4 gal

GEPARD²⁵T



STANDARDS COMPLIANCE



EN ISO 9001



EN 280:2001

Product specifications are subject to change without notice or obligation. Photographs and drawings in this document are for illustrative purposes only. Refer to the appropriate Operator's Manual for instructions on the proper use of this equipment. Failure to follow the appropriate Operator's Manual when using our equipment or to otherwise act irresponsibly may result in serious injury or death. The only warranty applicable to our equipment is the standard written warranty applicable to the particular product and sale and we make no other warranty, expressed or implied. Products and services listed may be trademarks, service marks or trade-names of Teupen Maschinenbau GmbH and/or its subsidiaries in the U.S.A. and many other countries. "Teupen", "Access redefined" and "LEO Series" are registered Trademarks of Teupen GmbH in the United States of America and many other countries. Version 2013-A © 2013 Teupen Maschinenbau GmbH.

Features

CHASSIS & STABILISATION

- Supple driving performance through low centre of gravity and optimal axis positioning
- Automatic overrun and auto-reverse system
- Fully-hydraulic, automatic leveling system with constant outrigger setup monitoring
- Variable stabiliser/outrigger system with one-side or both-sides narrow setup option
- Friction wheel drive
- Control of frictions wheel drive from the basket or over cable remote control
- Mounting device for nose wheel

BOOM SYSTEM

- Telescoping boom made from robust steel and aluminium profiles on wear-resistant rollers
- Removable cable remote control
- All functions are available from one control panel
- Electric-proportional controls with intuitive operator guidance
- Robust, lockable control panel cover
- Self-levelling platform with fully-hydraulic levelling system
- 180° basket rotation
- Boom rotation via high-performance slew ring, worm gear and hydraulic motor

POWER

- 230 V Electric Motor (EU), 115 V Electric Motor (US)
- Kubota Diesel engine D722, silenced
- Start-Stop switch of combustion engine in the basket

PRODUCTIVITY, SAFETY, QUALITY

- 230 V (EU), 115 V (US) double power outlet in the basket
- Ergonomically shaped basket with eyelets for safety belts and tool tray
- Cable remote control in lockable storage box
- Control of friction wheel drive, outriggers and automatic levelling system from the basket
- Hydraulic emergency lowering via hand pump or service mode
- Biodegradable hydraulic oil
- Cables and hoses are safely routed through the boom structure
- Lock valves - hydraulic return valves directly on all hydraulic cylinders
- Relief valves protecting the hydraulic system from too high pressures
- High-quality paint in RAL 3020 (red)
- Protective covers for oil-tank, emergency controls and connecting cables and hoses
- Complete second control box on the chassis and error analysis with display
- Easily removable covers for optimal accessibility
- Eye hooks
- Machine specifications correspond to Road Traffic Licensing Regulations (StVZO)
- Hour meter

GEPARD^{25T}

OPTIONS

- Snap hooks on boom
- Treecare package, consisting of:
 - Protective cover over control box
 - Protective cover telescoping cylinder
 - Protective cover outrigger cylinders
- 4 covers on piston rod cylinders (outrigger cylinder), 10 kg/11 lbs additional weight
- Electric emergency lowering, 12 kg/24 lbs additional weight
- Additional machine lighting according to country-specific regulations
- Height shut-off system for boom, 2 set-points
- Custom paintwork, one colour, according to RAL scheme (except metallic coatings, signal- or special colors)
- Custom paintwork, two colours, according to RAL scheme (except metallic coatings, signal- or special colors)
- Large stabilizing wheel
 - mechanically pluggable over ball-type hitch
 - large balloon wheel with max. load of 200 kg
 - durable black lacquer coating
- Separating grate in basket, 10 kg additional weight

ACCESSORIES

- Safety harness
- 4 Outrigger pads (340 x 850 mm/1ft 1in x 2ft 9in)
- Track mats (2000 x 1000 x 15 mm/6ft 6in x 3ft 3in x 1/2in), extra durable rubber

Enquiries from Europe, Asia, Middle East & Africa:

Corporate Headquarters

Teupen Maschinenbau GmbH
Marie-Curie-Str. 13
Germany

phone +49 2562 8161-0
fax +49 2562 6161-888

mail@teupen.com
www.teupen.com

Enquiries from North & South America:

US Office

Teupen USA, Inc.
10701 Southern Loop Blvd.
Pineville, NC 28134, USA

phone (704) 248-9871
fax (704) 248-9889

infousa@teupen.com
www.teupen.com/us